

Appendix F

# Annual Service Plan Priorities 2016-17 Progress Update

A greener place    Man gwyrdach



# Priorities Identified in 2016-17

1. Improve Standards of Attainment – particularly at Key Stage 4
2. Raise Standards of Attendance
3. Reduce the Impact of Poverty on Children and Young People
4. Complete review of Education Other Than at School (EOTAS)
5. Complete final phase of Additional Learning Needs (ALN) Review
6. Deliver 21<sup>st</sup> Century Schools Strategy and Development
7. Meet the requirements of the CCBC Medium Term Financial Plan
8. Maintain and deliver good practice in Safeguarding

A greener place    Man gwyrdach



# 1. Standards 2016-17

- Modest improvement in most indicators.
- Categorisation and inspection profiles more positive.
- New post for School Improvement – link appointed.
- Secondary headteachers agreed a two year plan for Key Stage 4.

# What could have been better?

- Pace of improvement at Key Stage 3 and 4 need to be accelerated
- Further improve outcomes for Free School Meals (FSM) pupils

A greener place    Man gwyrddach



## 2. Attendance 2016-17

- Primary attendance increased from 94.5% in 2014/15 to 94.6% in 2015/16 (i.e. 0.1% increase). During this period, Caerphilly moved from **19<sup>th</sup>** position to **17<sup>th</sup>** in Wales.
- Secondary attendance increased from 92.7% in 2014/15 to 93.4% in 2015/16 (i.e. 0.7% increase). During this period, Caerphilly moved from **22<sup>nd</sup>** position to **19<sup>th</sup>** in Wales.

# What could have been better?

- Utilisation of available data by Education Welfare Service (EWS) and schools
- Implementation of South East Wales Consortium (SEWC) strategy

A greener place    Man gwyrddach



# 3. Reducing Poverty 2016-17

- Case studies for the Family Liaison workers based in St James Primary and St Martins Secondary Schools showed sustained improved attendance and engagement for a targeted group of children and young people
- Initial feedback for the Family Learning Signature showed positive transition for year 6 pupils and families but less impact for Flying Start children to Foundation Phase provision
- Collaboration between the anti poverty programmes has enabled the development and implementation of the Joint Assessment Family Framework (JAFF)

A greener place    Man gwyrdach



# What could have been better?

- Closing the gap in performance
- Multi-agency working to improve learning opportunities in the St James area

A greener place    Man gwyrddach





# 4. Education Other Than at School 2016-17

- Procurement framework completed and implemented
- LPCs established
- Alternative venue for community tuition identified
- Alternative venue for New and Expectant Parents (NEP) established

A greener place    Man gwyrdach



# What could have been better?

- Reduction in permanent/fixed term exclusions and referrals to EOTAS panel are still to be achieved
- Expansion of appropriate affordable provision

A greener place    Man gwyrddach



# 5. Additional Learning Needs 2016 /2017

- Behaviour provision working group established and set to agree options by 31<sup>st</sup> May
- Recommendations from Additional support task group consulted on in summer term
- KS3 satellite established

A greener place    Man gwyrdach



# What could have been better?

- Engagement within the working group was limited at first

A greener place    Man gwyrddach



# 6. 21<sup>st</sup> Century Schools 2016-17

- Y Gwyndy – Scheme completed November 2016.
- Islwyn High School – completed end April 2017 with staff and pupils moving 26 June and 3 July respectively.
- Abertysswg/Pontlloftyn Primary – commenced Autumn 2016. Turf cutting ceremony 5 December. Due for completion December 2017 with opening January 2018.
- Blackwood Comprehensive – proposals for £2m spend agreed and planned over 2017/18 and 2018/19.
- Cwmcarn/Newbridge – proposed new build at Newbridge
- A draft School Place Planning Strategy has been considered by the Schools Strategy Board in December 2016.
- Capital Programme allocated against identified schemes. Agreed by Scrutiny 27 February and Cabinet 15 March 2017.

A greener place    Man gwyrdach



# What could have been better?

- School place planning strategy
- Federation/ collaborative working

A greener place    Man gwyrddach



# 7. MTFP 2016-17

- MTFP savings target for 2016-17 was £1.6m
- In the main all savings proposals for 2016-17 were achieved
- Reduction in school balances 2016-17
- MTFP Target for 2017-18 is £867k.

A greener place    Man gwyrddach



# What could have been better?

- Music Service
- EOTAS
- Relief supply cover/ Maternity - schools

A greener place    Man gwyrddach





# 8. Safeguarding 2016-17

## Safeguarding

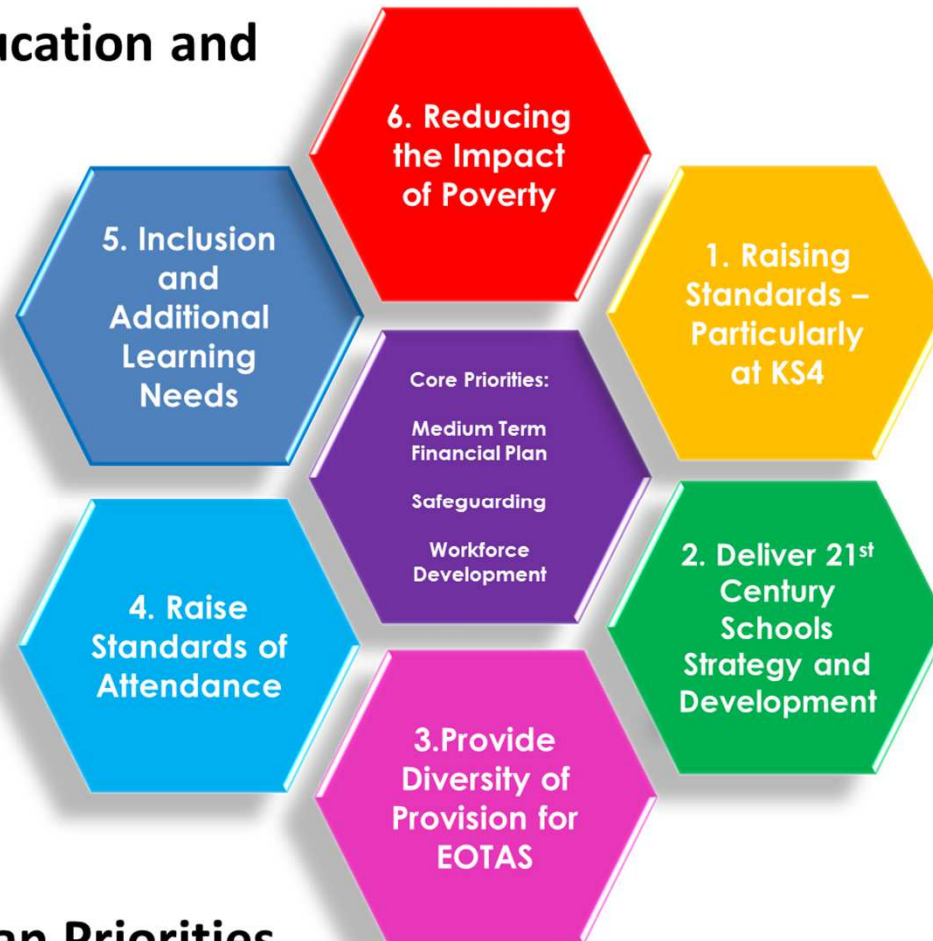
- A SEWC Evaluation framework has been developed and is being trialled by Safeguarding Leads.
- A SEWC Evaluation framework has been developed and is being trialled by Safeguarding Leads.
- an effective Model Safeguarding Policy was circulated to schools and settings in October 2016

A greener place    Man gwyrdach



# Priorities identified for 2017-18

## Directorate of Education and Lifelong Learning



**2017-18  
Annual Service Plan Priorities**